

**PORCH**

**LIVING ROOM**  
15'-0" x 10'-0"

**UP**

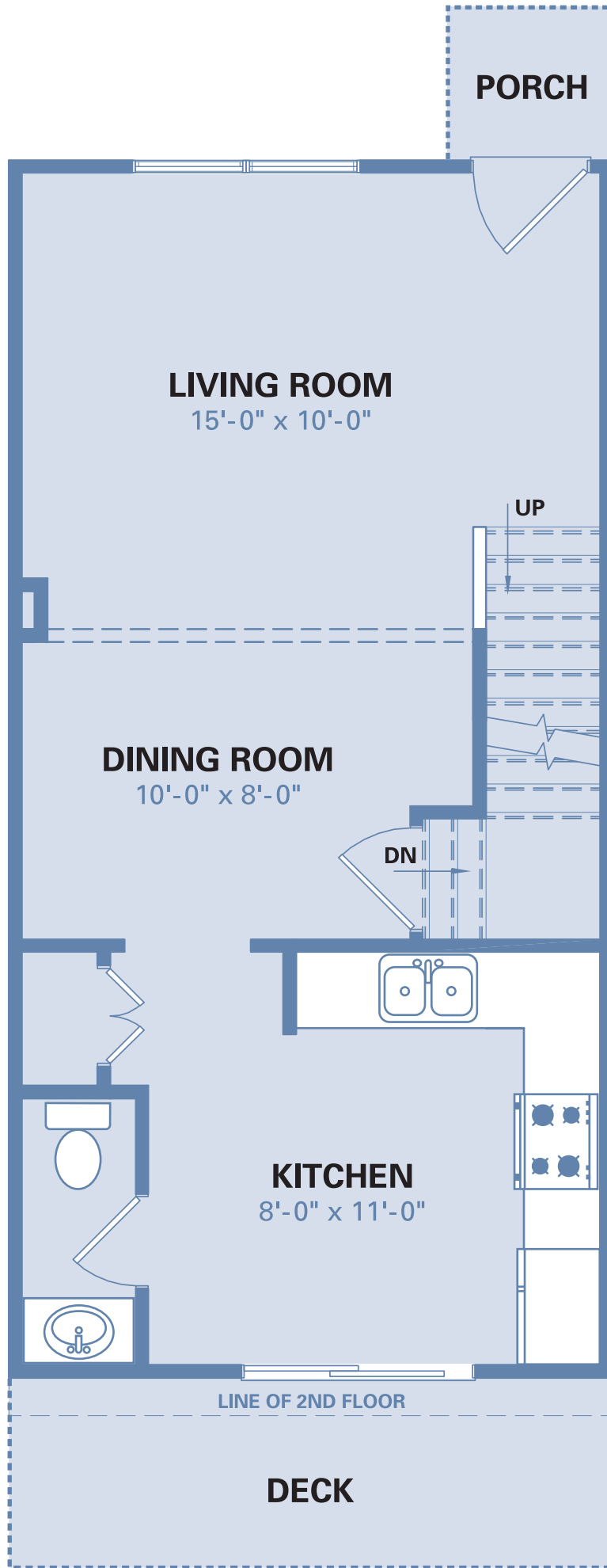
**DINING ROOM**  
10'-0" x 8'-0"

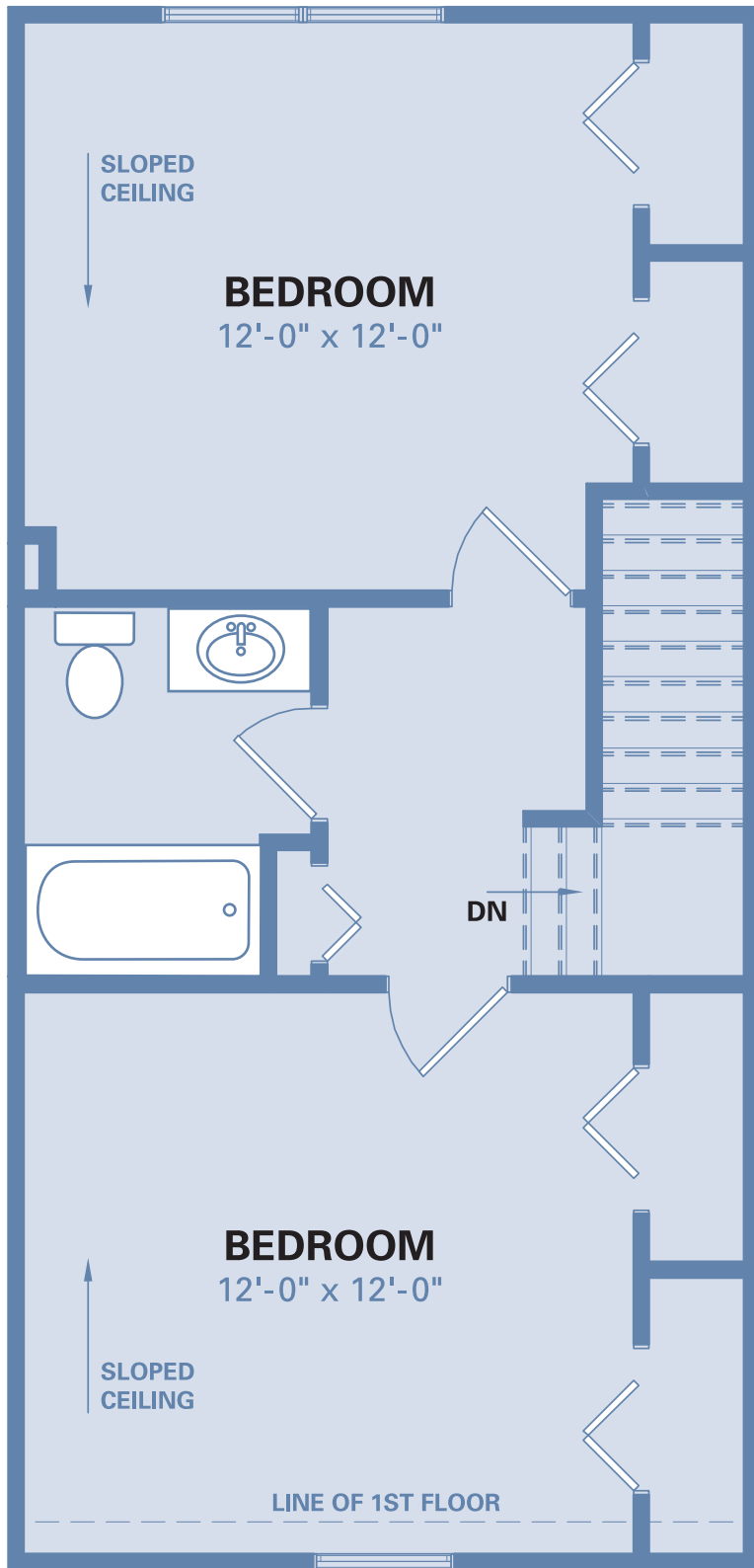
**DN**

**KITCHEN**  
8'-0" x 11'-0"

LINE OF 2ND FLOOR

**DECK**





SLOPED  
CEILING

**BEDROOM**  
12'-0" x 12'-0"

DN

**BEDROOM**  
12'-0" x 12'-0"

SLOPED  
CEILING

LINE OF 1ST FLOOR